



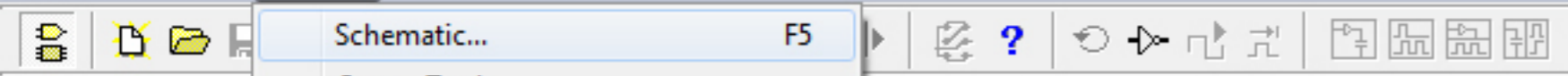
Browse Search Digital

Hotkey... Place

- Capacitors
- Connectors
- Digital
- Displays
- Drafting
- Linear Active
- Power Supplies
- Relays
- Resistors
- Speaker/Microphone
- Switches
- Transducers
- Transformers
- Transistors and Diodes
- Transmission Lines
- User Defined

Model	Description

Name	
Title	
Rev	ID
Rev	ID
Date: Date	Page: 1 of 1



- Schematic... F5
- Cursor Tools
- Schematic Display Data... Ctrl+L
- Device Display Data... Ctrl+K
- Library Location...

Browse Search

Hotkey... Place

- Capacitors
- Connectors
- Digital
- Displays
- Drafting
- Linear Active
- Power Supplies
- Relays
- Resistors
- Speaker/Microphone
- Switches
- Transducers
- Transformers
- Transistors and Diodes
- Transmission Lines
- User Defined

Model	Description

Name	
Title	
Rev	ID
Rev	ID
Date: Date	Page: 1 of 1



Browse Search Digital

Hotkey... Place

- Capacitors
- Connectors
- Digital
- Displays
- Drafting
- Linear Active
- Power Supplies
- Relays
- Resistors
- Speaker/Microphone
- Switches
- Transducers
- Transformers
- Transistors and Diodes
- Transmission Lines
- User Defined

Model Description

Model	Description

### Schematic Options

General | Title Block | Colors

**Options**

- Arrow/Wire
- Auto Refresh
- Auto Repeat
- Prompt To Save
- Quick Connect
- Single Click Connect
- Show Bus Labels
- Show Node Names
- Show Page Breaks
- Show Pin Dots
- Show Prop Delays

**Grid**

- Visible Size: 25
- Snap To
- Print

**Designations**

Starting number: 101

- Show for new devices

**Border**

- Visible on screen
- Do not print

**Device Font**

TrueType: Courier New

Save current settings as defaults

OK Cancel

Name	
Title	
Rev	ID
Rev	ID
Date: Date	Page: 1 of 1

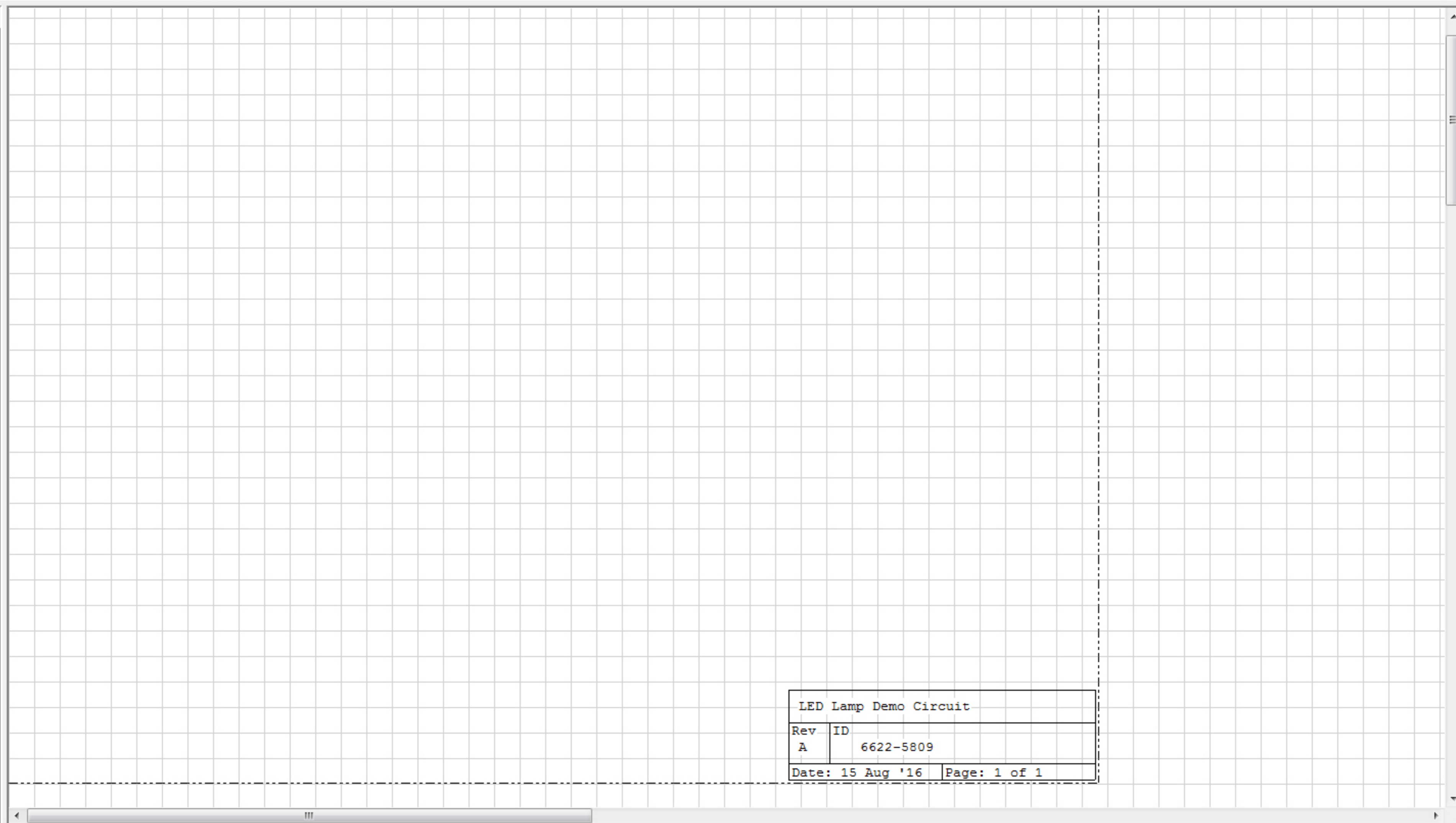


Browse Search Digital

Hotkey... Place

- Capacitors
- Connectors
- Digital
- Displays
- Drafting
- Linear Active
- Power Supplies
- Relays
- Resistors
- Speaker/Microphone
- Switches
- Transducers
- Transformers
- Transistors and Diodes
- Transmission Lines
- User Defined

Model	Description



LED Lamp Demo Circuit	
Rev	ID
A	6622-5809
Date: 15 Aug '16	Page: 1 of 1



Browse Search Digital



Hotkey... Place

- Capacitors
- Connectors
- Digital
- Displays
- Drafting
- Linear Active
- Power Supplies
  - Linear
    - +V
    - Battery
    - Chassis Groun
    - Ground
    - I Source
    - V Source
    - fuse
- Relays
- Resistors
- Speaker/Microphone
- Switches
- Transducers
- Transformers
- Transistors and Diodes
- Transmission Lines
- User Defined

V101  
10V

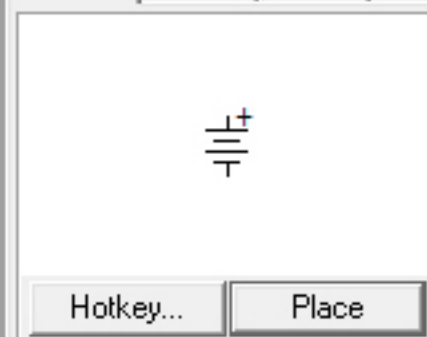
Model Description

LED Lamp Demo Circuit	
Rev	ID
A	6622-5809
Date: 15 Aug '16	Page: 1 of 1





Browse Search Digital



- Capacitors
- Connectors
- Digital
- Displays
- Drafting
- Linear Active
- Power Supplies
  - Linear
    - +V
    - Battery
    - Chassis Groun
    - Ground
    - I Source
    - V Source
    - fuse
- Relays
- Resistors
- Speaker/Microphone
- Switches
- Transducers
- Transformers
- Transistors and Diodes
- Transmission Lines
- User Defined

V101  
10V

**Device Properties**

Device	Battery	<input type="checkbox"/> Visible
Label-Value	<input type="text" value="9V"/>	<input checked="" type="checkbox"/> Visible
Designation	<input type="text" value="V101"/>	<input checked="" type="checkbox"/> Visible
Description	<input type="text"/>	<input type="checkbox"/> Visible
Package	<input type="text"/>	
Auto Designation Prefix	<input type="text" value="V"/>	<input checked="" type="checkbox"/> Analog
Spice Prefix Character(s)	<input type="text" value="V"/>	<input checked="" type="checkbox"/> Digital
Parameters	<input type="text"/>	
Bus Data	<input type="text"/>	
Spice Data	<input type="text" value="%D %1 %2 DC %V"/>	
<input checked="" type="checkbox"/> Exclude From PCB		<input type="checkbox"/> Exclude From Parts

Pins...    Faults...    OK    Cancel

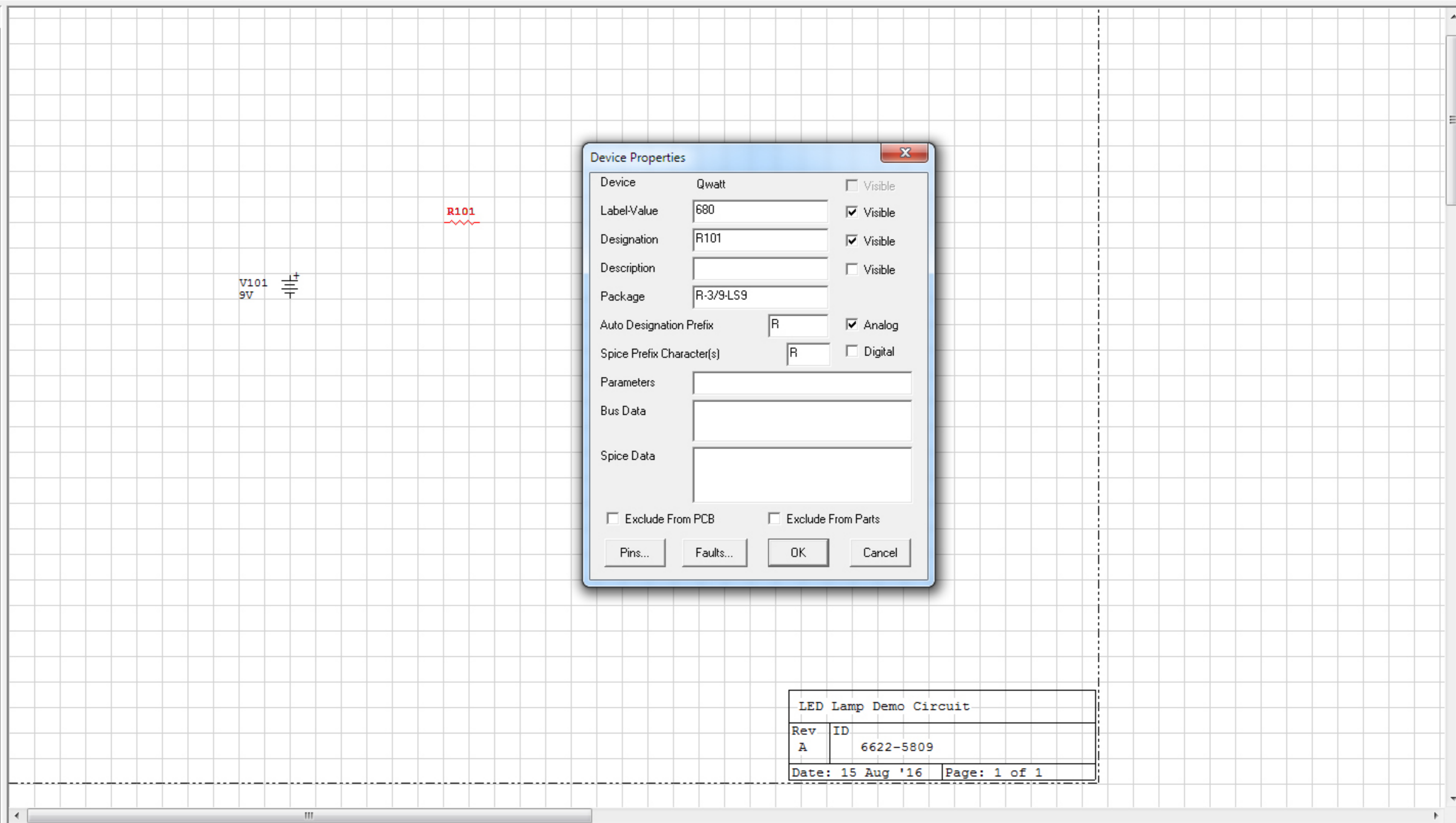
LED Lamp Demo Circuit	
Rev	ID
A	6622-5809
Date: 15 Aug '16	Page: 1 of 1



Browse Search Digital

- Hotkey...
- Place
- Capacitors
- Connectors
- Digital
- Displays
- Drafting
- Linear Active
- Power Supplies
  - Linear
    - +V
    - Battery
    - Chassis Groun
    - Ground
    - I Source
    - V Source
    - fuse
- Relays
- Resistors
  - 10mm trimpot
  - Fixed film
    - 1watt
    - 1wattV
    - 2watt
    - 2wattV
    - Hwatt
    - Qwatt
    - QwattS
    - QwattV
- Panel Mount
- Speaker/Microphone
- Switches
- Transducers
- Transformers
- Transistors and Diodes

Model	Description
68	p68 Resistor
680	p680 Resist
680K	p680K Resis
68K	p68K Resist
7.5	p7.5 Resistc



**Device Properties**

Device: Qwatt  Visible

Label-Value: 680  Visible

Designation: R101  Visible

Description:   Visible

Package: R-3/9-LS9

Auto Designation Prefix: R  Analog

Spice Prefix Character(s): R  Digital

Parameters:

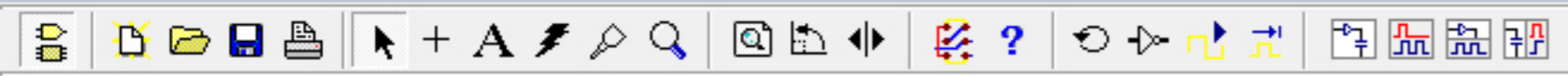
Bus Data:

Spice Data:

Exclude From PCB  Exclude From Parts

Pins... Faults... OK Cancel

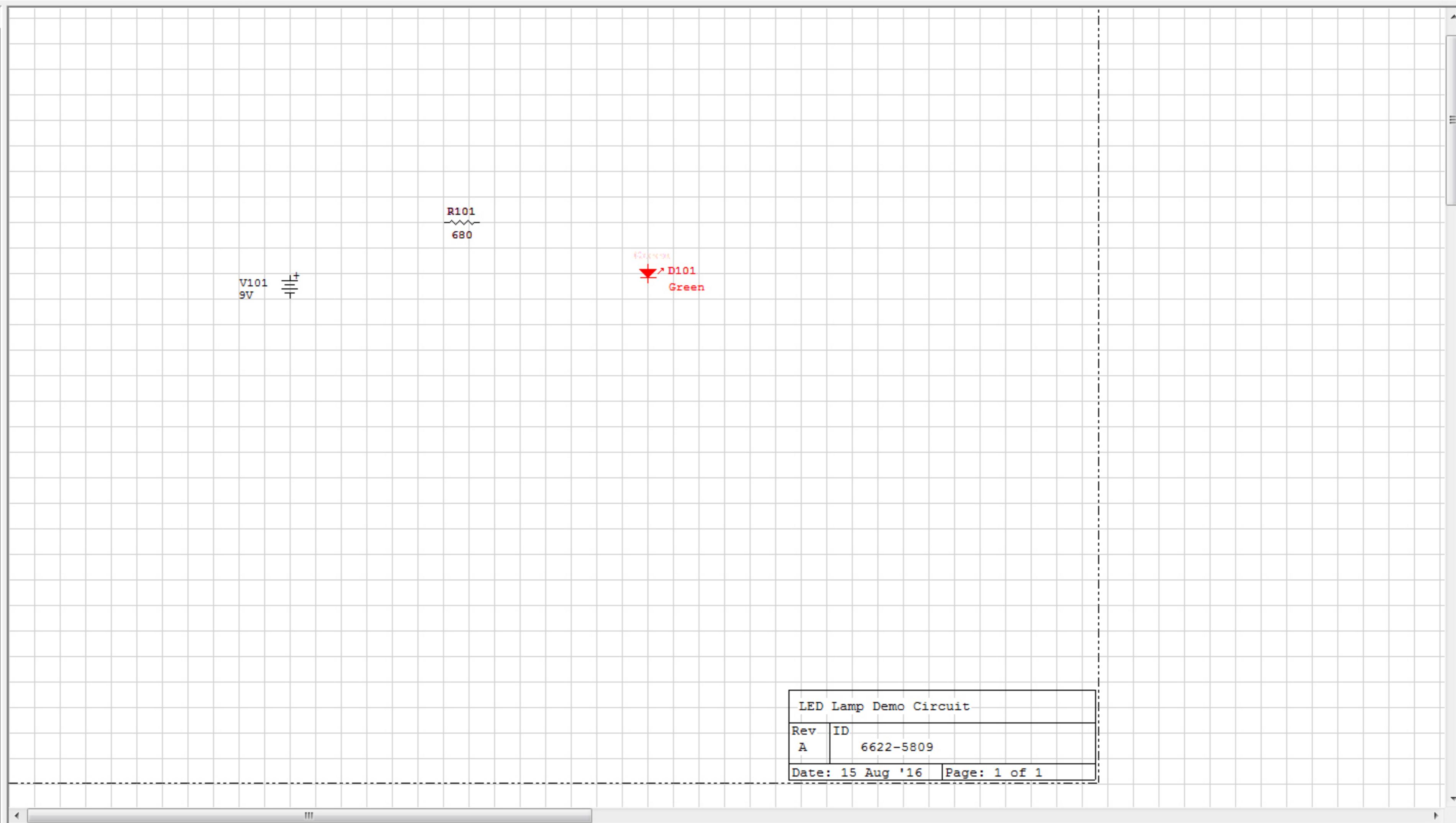
LED Lamp Demo Circuit	
Rev	ID
A	6622-5809
Date: 15 Aug '16	Page: 1 of 1



Browse Search Digital

- Ground
- I Source
- V Source
- fuse
- Relays
- Resistors
  - 10mm trimpot
  - Fixed film
    - 1watt
    - 1wattV
    - 2watt
    - 2wattV
    - Hwatt
    - Qwatt
    - QwattS
    - QwattV
  - Panel Mount
- Speaker/Microphone
- Switches
- Transducers
- Transformers
- Transistors and Diodes
  - BJT
  - Diode
    - Lighted
    - Rectifir
    - RectifV
    - Signal
    - SignalS
    - Zenerd5
    - Zenerd5S
    - fwbridge
- FFT

Model	Description
Green	p Green Lan
Green	p Green Lan
Green	p Green Lan
Red	p Red Lamp
Red	p Red Lamp



LED Lamp Demo Circuit	
Rev	ID
A	6622-5809
Date: 15 Aug '16	Page: 1 of 1

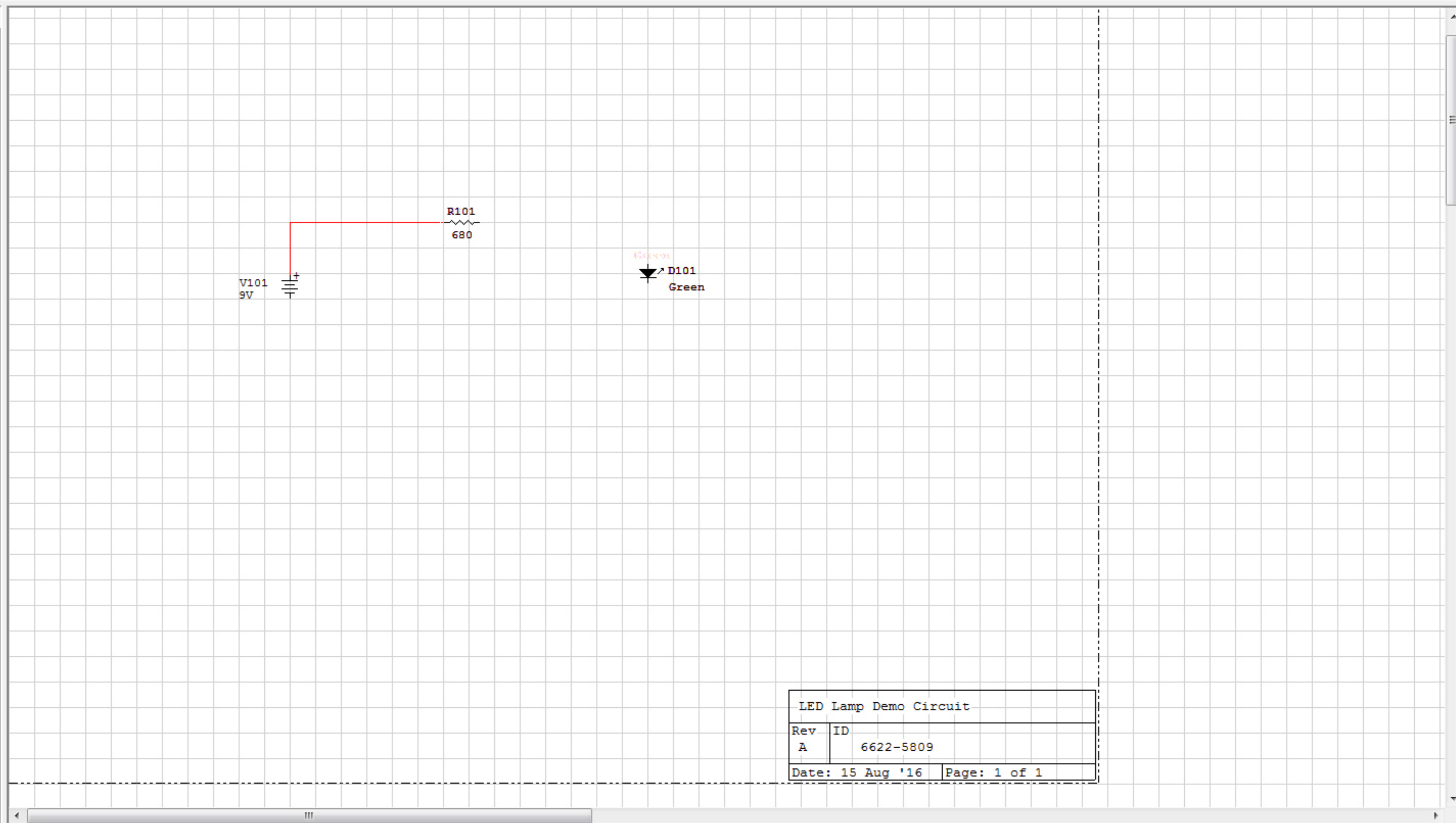




Browse Search Digital

- Ground
- I Source
- V Source
- fuse
- Relays
- Resistors
  - 10mm trimpot
  - Fixed film
    - 1watt
    - 1wattV
    - 2watt
    - 2wattV
    - Hwatt
    - Qwatt
    - QwattS
    - QwattV
  - Panel Mount
- Speaker/Microphone
- Switches
- Transducers
- Transformers
- Transistors and Diodes
  - BJT
  - Diode
    - Lighted
    - Rectifir
    - RectifV
    - Signal
    - SignalS
    - Zenerd5
    - Zenerd5S
    - fwbridge
- FFT

Model	Description
Green	p Green Lan
Green	p Green Lan
Green	p Green Lan
Red	p Red Lamp
Red	p Red Lamp



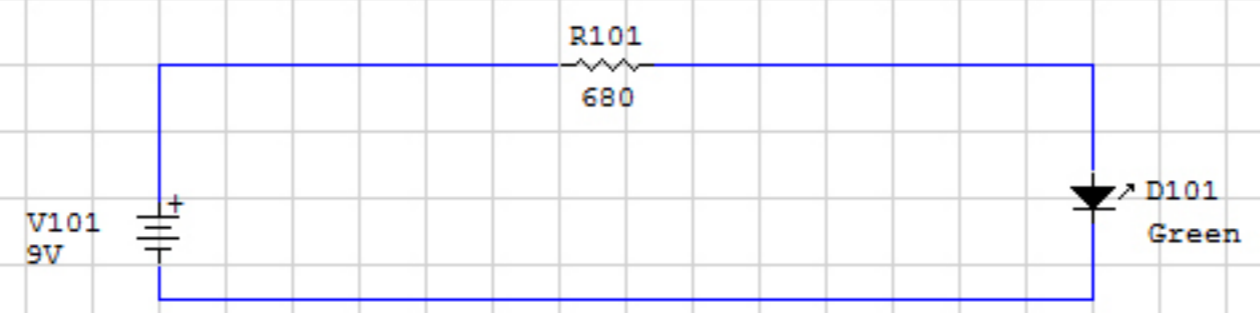
LED Lamp Demo Circuit	
Rev	ID
A	6622-5809
Date: 15 Aug '16	Page: 1 of 1



Browse Search Digital

- Ground
- I Source
- V Source
- fuse
- Relays
- Resistors
  - 10mm trimpot
  - Fixed film
    - 1watt
    - 1wattV
    - 2watt
    - 2wattV
    - Hwatt
    - Qwatt
    - QwattS
    - QwattV
  - Panel Mount
- Speaker/Microphone
- Switches
- Transducers
- Transformers
- Transistors and Diodes
  - BJT
  - Diode
    - Lighted
    - Rectifir
    - RectifV
    - Signal
    - SignalS
    - Zenerd5
    - Zenerd5S
    - fwbridge
- FFT

Model	Description
Green	p Green Lan
Green	p Green Lan
Green	p Green Lan
Red	p Red Lamp
Red	p Red Lamp



LED Lamp Demo Circuit	
Rev	ID
A	6622-5809
Date: 15 Aug '16	Page: 1 of 1